

# 92004K - 4 Function + Keypad with Mini Transmitter

## 92 Series - FET System

### SYSTEM PART NUMBER

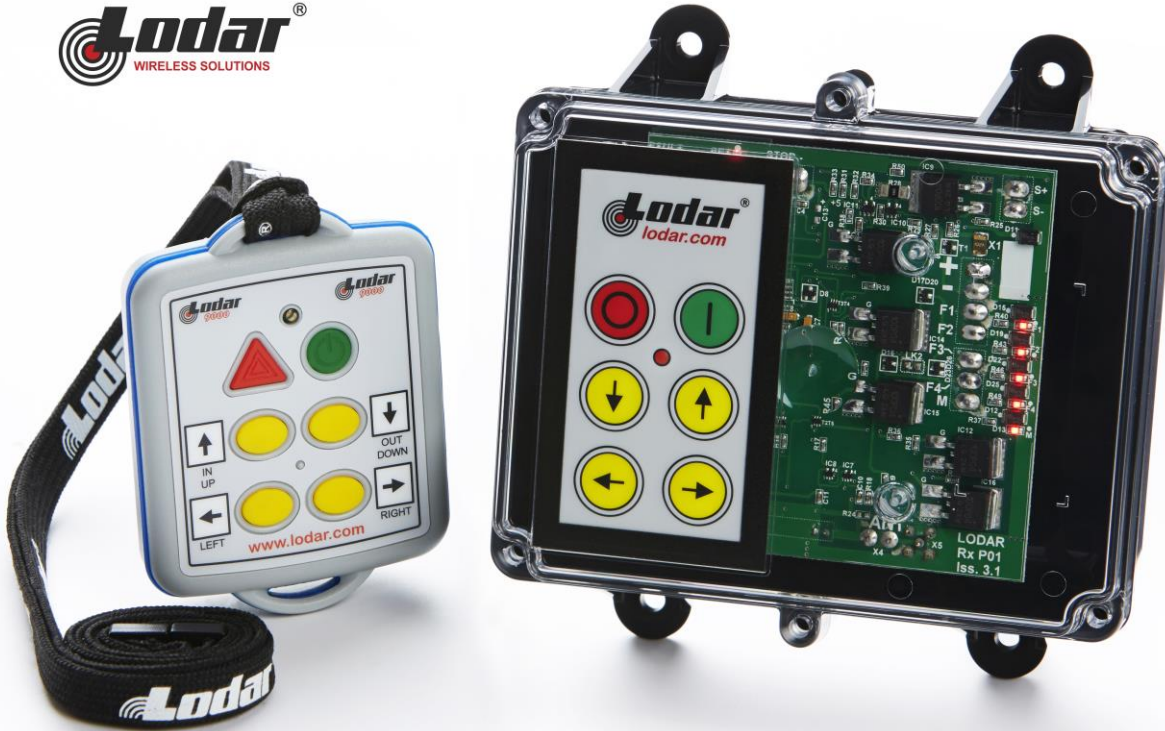
92004K 4 Function Receiver + Keypad with Master + 4 Function Mini Transmitter

### CONTENTS

1 x Receiver + Keypad  
1 x Mini Transmitter  
1 x Lanyard  
1 x Instructions

### REPLACEMENT TRANSMITTERS

90004TX 4 Function Mini Transmitter



### MINI TRANSMITTER SPECIFICATION

#### SWITCH

Type Rubber membrane with carbon contact

#### BATTERY

Type 3 Volts (2 x AAA)

#### CURRENT DRAW

Quiescent 4 micro amps  
Operating 20 milliamps

#### PROTECTION

Reverse polarity Protected  
IP Rating 65  
Registration codes Over 16 million

#### PERFORMANCE

Temp Range -10° C to + 40° C (13° F to + 104° F)  
Range Nominal 45 metres (150 ft) from the Receiver, when driving a momentary output without signal drop out  
Transmitted power 1 mW Typical

#### COMPLIANCE

EMC Exceeds ETSI 300 220. Compliant E11 10R-037601  
Modulation FM  
Frequencies 418.00 MHz F1D USA (optional UK)  
433.92 MHz F1D World wide (optional USA)

## RECEIVER SPECIFICATION

### KEYPAD

Back up Control Works independently from the Transmitter

Security coding available as an option

### SWITCH TYPE

Output Switching MOS Field Effect Transistor (P Channel Power MOSFET)

### SUPPLY VOLTS

Nominal 12/24 Volts DC  
 Absolute Maximum 40 Volts DC  
 Minimum 8 Volts DC  
 Output Switch Supply Internal 12/24 Volts

### AMPS

FET Rating 15 Amps  
 System Rating 15 Amps  
 Quiescent Current 25 mA on Standby (Not SET)  
 Overload Protection 15 Amps (Auto Shutdown)

### AERIAL

Internal Antenna Yes Supplied and fitted  
 External Antenna Optional See Accessories.

### OUTPUTS

Master 1 Can be Parallel or Continuous. Not all models – see Build Specification Table.  
 Function 4  
 Master (Secondary) 1 Continuous. Not all models, see Build Specification Table.

### CONFIGURATION

RS232 Programming to users' requirements Yes Not all models, see Build Specification Table. For programming interlocks, push/push latch, parallel master inhibit, timeout, channel timeout delay, master on delay, radio button de-latching and output allocation.

### PERFORMANCE

Simultaneous Outputs Yes With horizontal interlocks (Interlocks are programmable – see CONFIGURATION above)  
 Instant TX response Yes No perceivable delay between TX operation and RX action

### DIAGNOSTICS

LED's Yes Confirm 5 Volts, SET, Fault and all Outputs.

### PROTECTION

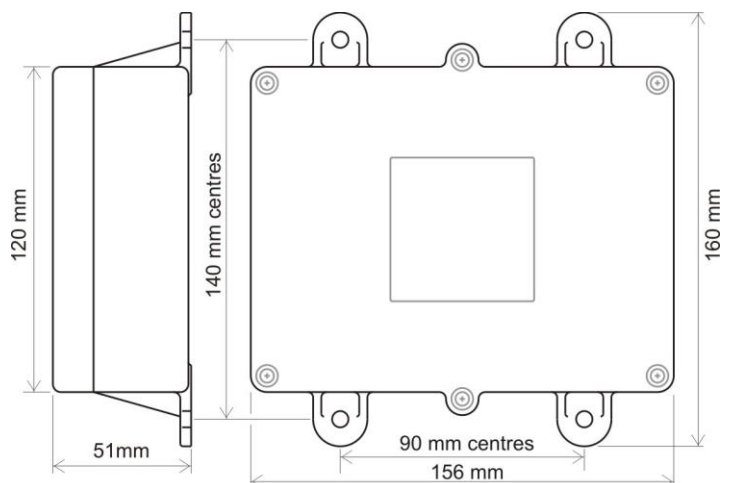
ESR Safety Yes See ESR Safety document.  
 Back EMF Yes Diode protected on all outputs  
 Registration codes Yes Over 16 million  
 STOP Connection Yes Internal Emergency Stop Connection. Not all models, see Build Specification Table.

### WIRING

Wiring Loom Yes 3 metres (10ft) supplied and fitted  
 Cable Gland Yes Supplied and fitted  
 Connections Screw terminal into plug and socket on PCB, for easy "swap out"

### ENCLOSURE

Weight 0.3 lbs (335gms)  
 Lid Clear PVC - to view LEDs  
 Base Black PVC  
 Breather Gortex fitted in base  
 Mounting 4 external lugs  
 Fixings 5mm (3/16") not supplied  
 IP Rating Performs to IP67 standard (0.5 metre water for 1 hour)



### ACCESSORIES

9861, 9862, 9863 and 9869 – External Antenna with cable.

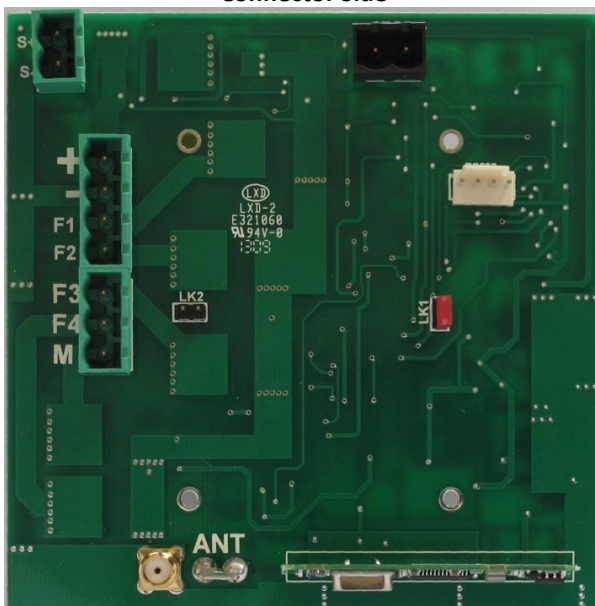
<b>92 Series</b>			<b>92 0 00</b>	<b>92 0 02</b>	<b>92 0 04</b>	<b>92 1 00</b>	<b>92 1 02</b>	<b>92 1 04</b>
BUILD SPECIFICATION TABLE FOR MODELS IN THIS RANGE								
Ident	Legend	Connection						
	+ - F1 F2	Positive, Negative, F1 and F2	S	S	S	S	S	S
	F3 F4 M	F3, F4, and Master		M	S		M	S
	ST -	STOP and -		S	S		S	S
	S+ S-	S+ S-		S	S		S	S
	ANT	Internal Antenna	S	S	S	S	S	S
	SMA	Connector (external antenna)		S	S		S	S
LK1	P	Master - Parallel		C	C		C	C
LK2	C	Master – Continuous		C	C		C	C
LK3	RS232	RS232		S	S		S	S
		3 metres 4 core	S		S	S		
		3 metres 7 core		S	S		S	S
		9801 Lo-Cover			S	S	S	S

S = Standard. M = Standard but Master only connected. C = Customer configured (see “Factory Settings”).

+	Positive	12/24 Volt supply
-	Negative	0 Volts
F1, F2, F3 & F4	Outputs to F1 through F4	
M	Master Output	
STOP -	STOP, when grounded	shuts down the Receiver
S+ S-	Master Secondary	for Safety solenoid connections etc.
ANT	Blade connector	for internal antenna
SMA	Aerial connection	for optional external antenna (internal antenna must be removed)
LK1	Jumper fitted to this link	for continuous Master
LK2	Jumper fitted to this link	for parallel Master
Factory Settings	418MHz configured	Parallel, 433.92MHz configured Continuous
LK3	RS232 for interface	to access special programmes
	Also for connection	to RS232 modules

## Photo of PCB

Connector Side



Component Side

