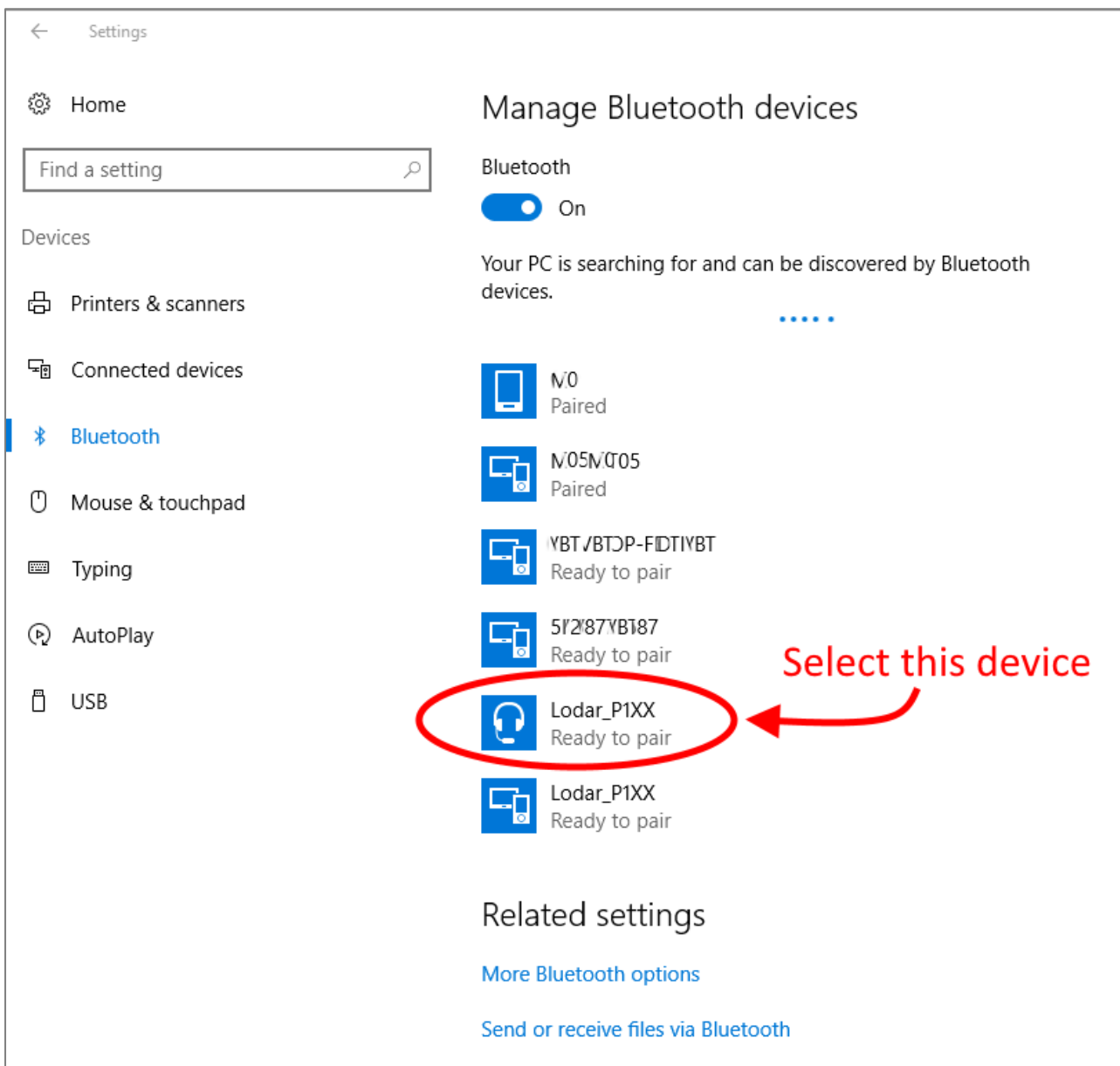


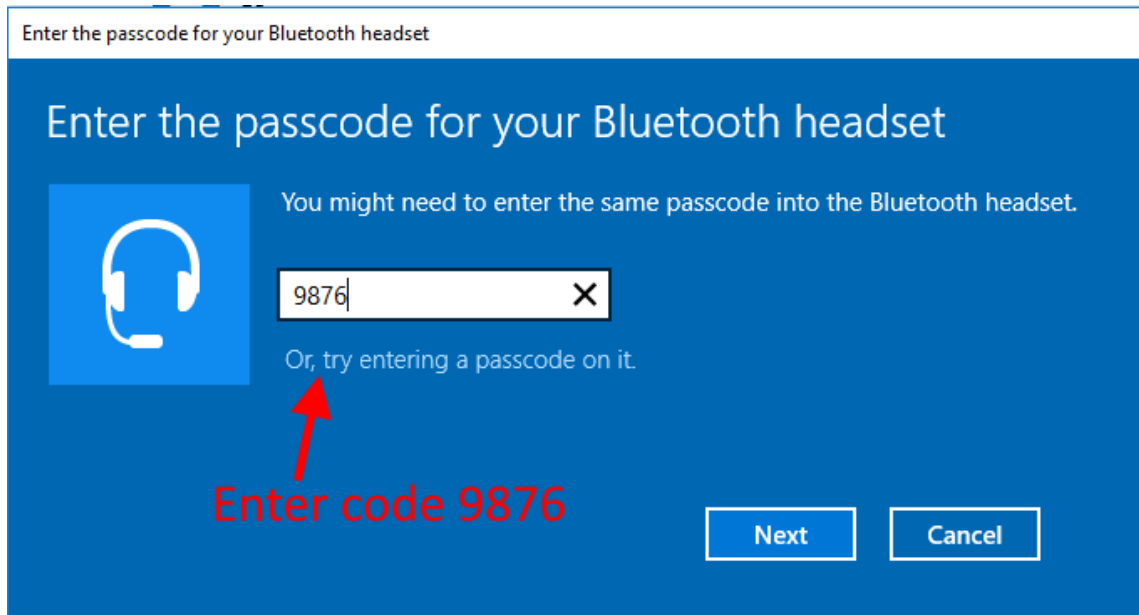


Bluetooth Quick Installation Guide

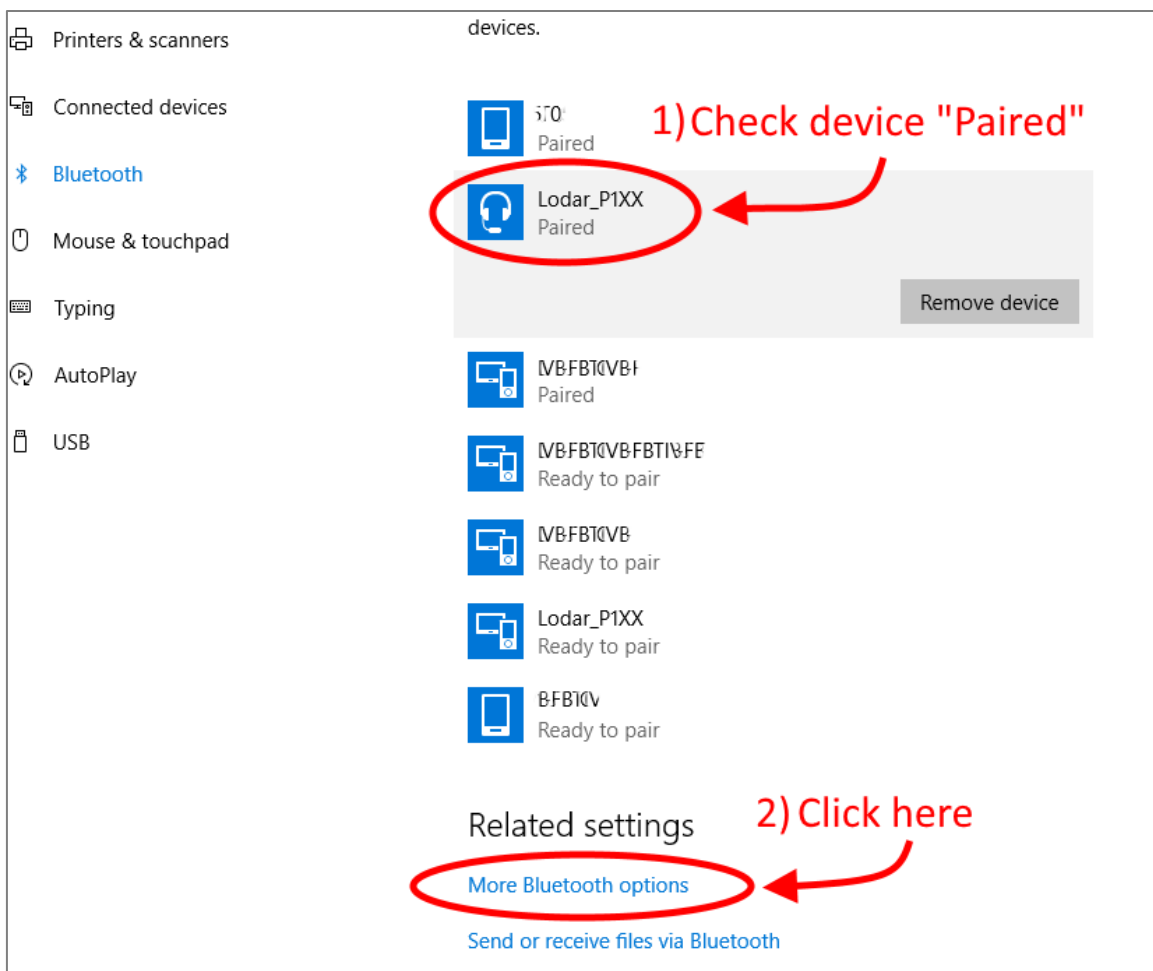
- 1) If your computer does not have a Bluetooth adaptor installed, please install a Bluetooth adaptor following the manufacturer's instructions.
- 2) **Open Bluetooth settings**, this can be typed into the "search windows" box or click the Bluetooth icon that should appear on the system tray.
- 3) Select Device "**Lodnar_P1XX**" device (the headset icon).



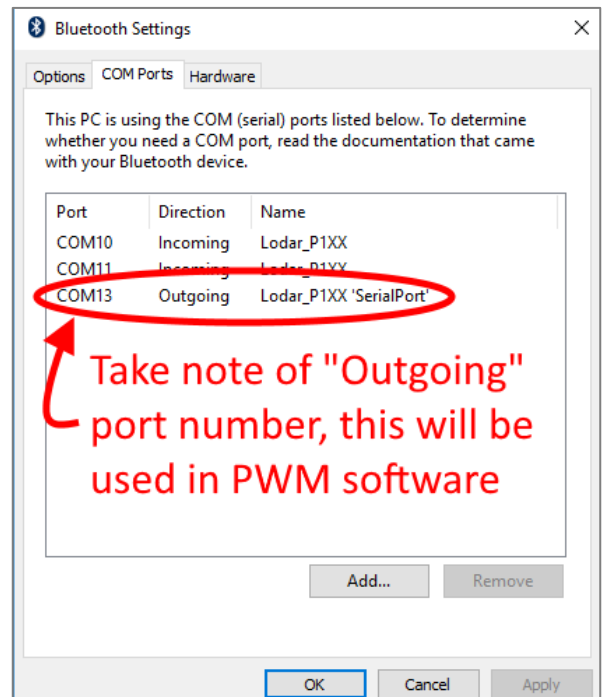
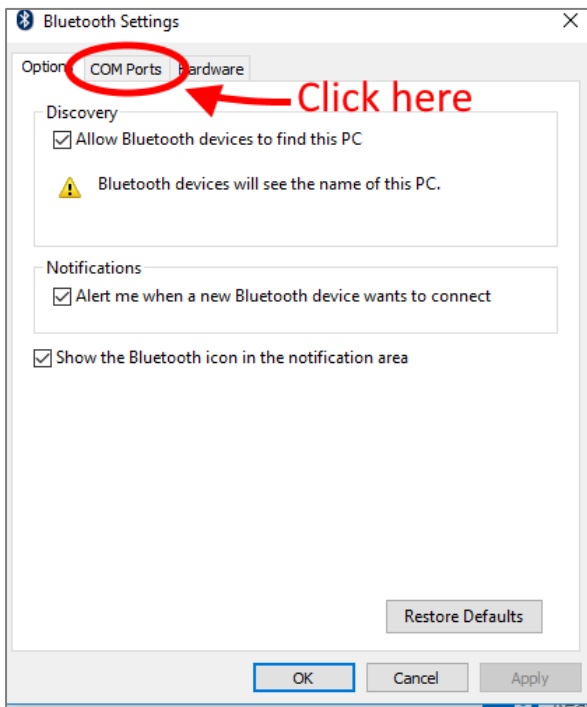
4) Enter the code: **9876**



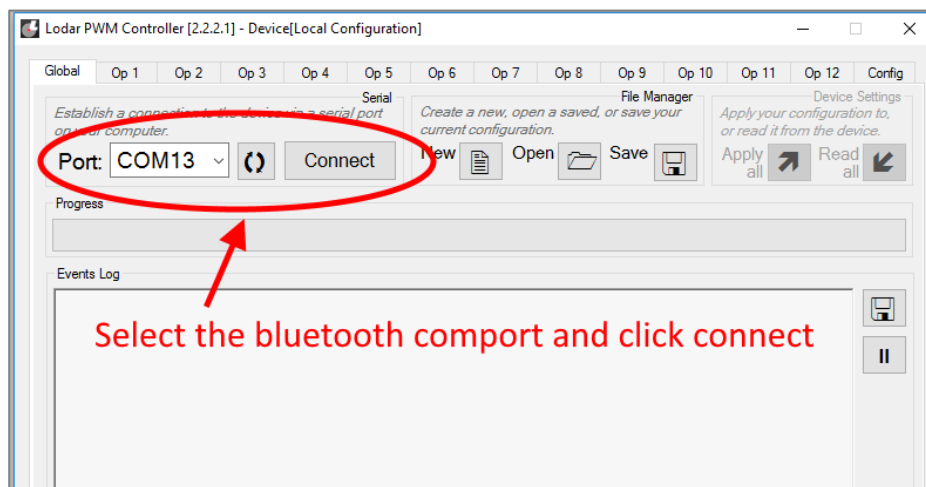
5) Once paired, click **More Bluetooth options**



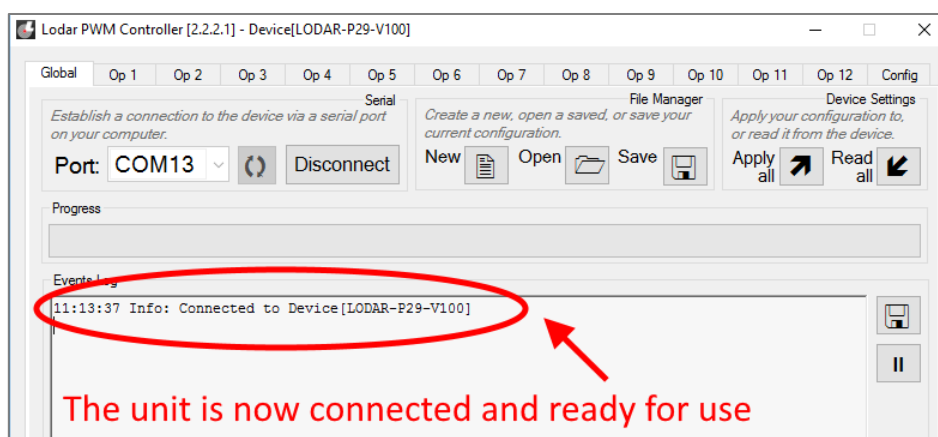
6) Click the **COM Ports** Tab.



7) **Start the Lodar PWM Controller software** and **select the com port** show in step 6. If the com port is not apparent, please click the refresh button, indicated by the arrow in step 7.



8) Click **Connect**, the unit will now be ready to use and program.

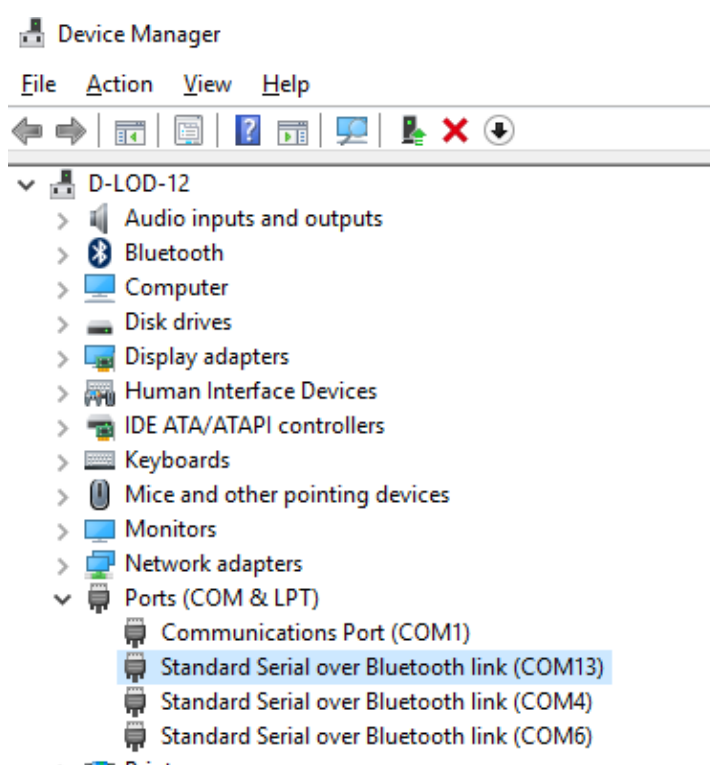


NOTE - Do not operate the Transmitter whilst writing to and from the Receiver, please make sure the **STOP** button has been pushed on the Transmitter to turn the system off. If the config settings are changed during the Transmitter operation, conflict may occur.

- 9) Once the config settings have been applied, the **Lodar Receiver Must Be Disconnected** from the PC software, as shown in the figure below. If this step is not taken place, the com port of the Bluetooth module will change and may increment the port number to a value which cannot be seen from the software. The only way to fix this issue is to restart the computer, or reassign the com port in the device manager. The following link explains how to change the COM port:

[How to Change The COM Port](#)

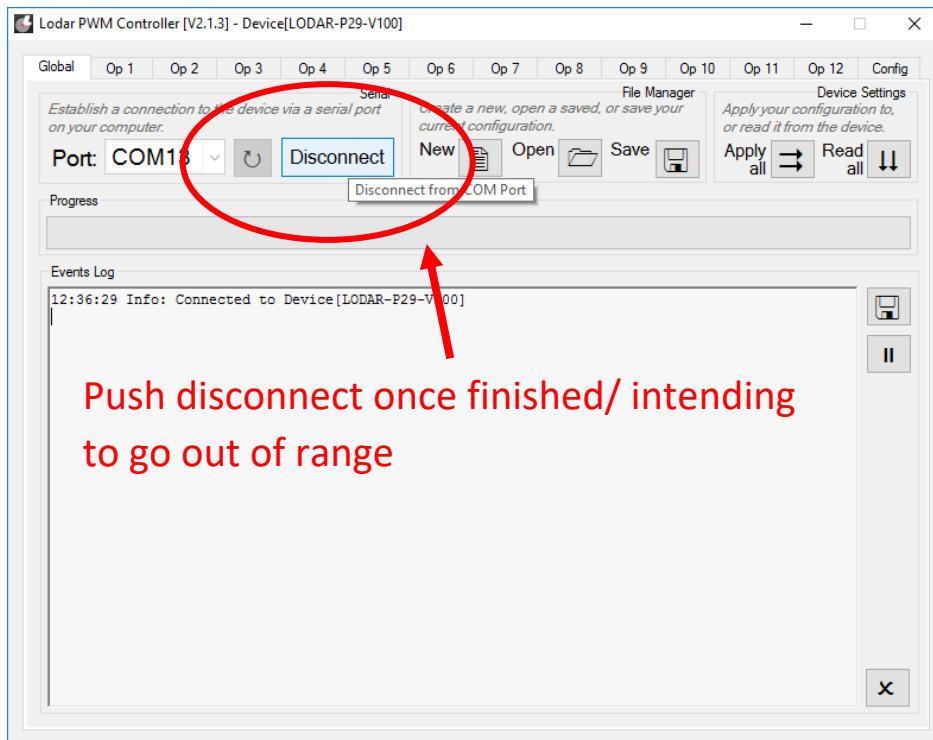
The link will refer to a **“SeaLINK + 422 USB to RS-422 Converter (COM4)”** as an example. The user will want to reassign the **Lodar COM port**. The screen shot below highlights the Lodar COM port for this example.



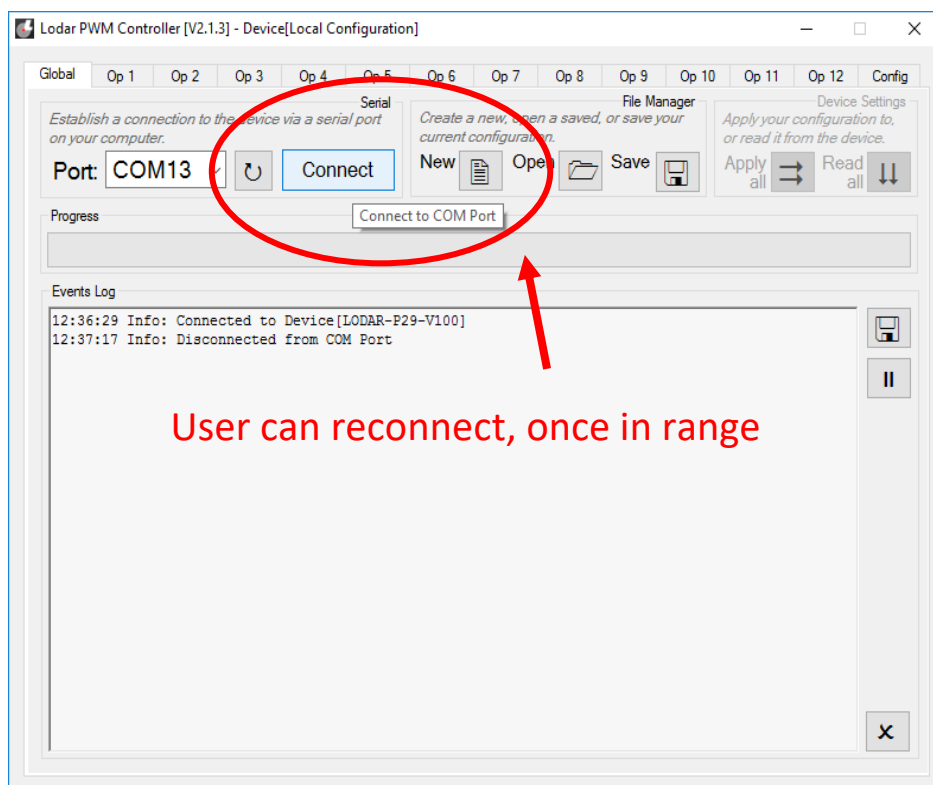
This issue will also occur if the user walks **out of range** when connected to the Lodar receiver.

- 10) If you wish to move away from the Lodar Receiver, we recommend you disconnect the software, and re-connect when in range. The range depends on the computer and position of the receiver so once connected we do not recommend moving and further away from the Lodar Receiver.

Steps 10 and 11 shows the user that the software can connect to the same com port again when disconnecting and then re-connecting when the Lodar receiver is in in range.



11) Reconnecting the Software to the Lodar Receiver.



12) The following message will be seen upon successful connection. More than one attempt to apply the config is sometimes required.

